

Innovative features

- Biogas facilities
- Large area arable land located closely
- 100% sexed semen



Buildings & Equipment

- Cubicles with rubber mat or water mattress
- Individual calving pens
- Milking parlour (2 x 20)
- Manure scraper
- Individual calf housing & group housing
- Separate location for youngstock & far-off cows

Labour force

- 6 employees



Areas of interest

- Environmental impact
- International relations among dairy farmers

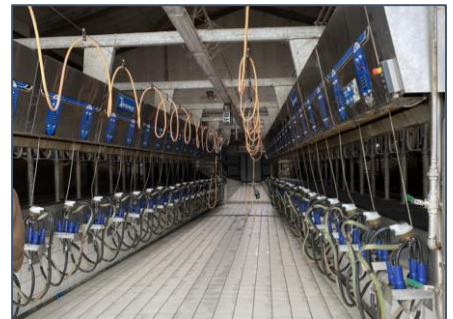
The herd

415 cows in total
365 cows in milk
405 dairy heifers

All-year-round calving
Age at first calving: 24 mo
Fulltime indoor housing

Breeds: 98% Holstein
2% Holstein x Belgian Blue

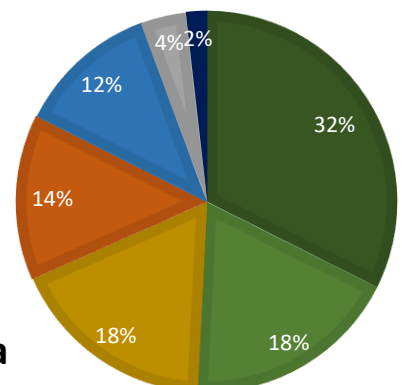
Milk production: 12,608 kg ECM per cow per year



Agricultural area

162 ha silage maize
92 ha grains
88 ha rapeseed
70 ha grassland
60 ha winter wheat
19 ha 'braak'
9 ha other

Total: 500 ha





Strengths

- High milk production per cow
- Biogas production
- Farm machinery is leased
- Low tax per kg milk produced
- Low debt



Weaknesses

- No pasture access
- Concrete, rubber matted cubicles for youngstock



Opportunities

- Member of European Dairy Association
- X
- X



Threats

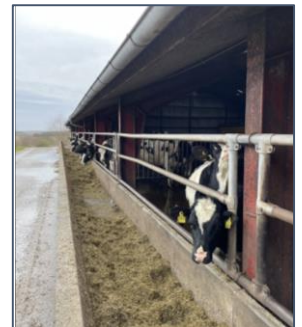
- War in Eastern Europe
- Lack of reliable employees

Innovative practice

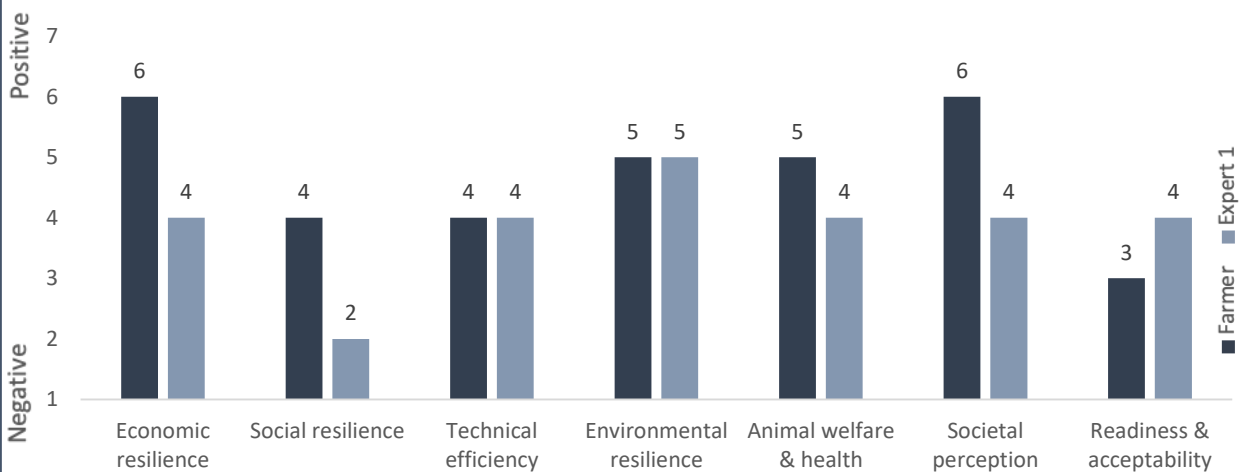
Installing a biogas plant as strategy for improving environmental resilience. Co-digestion of cattle and pig manure & maize silage

Potential future solutions

- Employee cooperation
- Self-sufficiency in feed production



Effects of innovative practice on resilience



“Resilience 4 Dairy” is a European project involving 15 European countries and 18 partners. R4D is a thematic network on innovations and aims to support EU dairy farming in these regions where dairy farming is a main economic activity.



R4D pilot farmers are involved in a National Dairy Akis group where needs, solutions and knowledge are exchanged with other farmers, advisors and scientists on their way to build a resilient system. More information: <https://resilience4dairy.eu/>