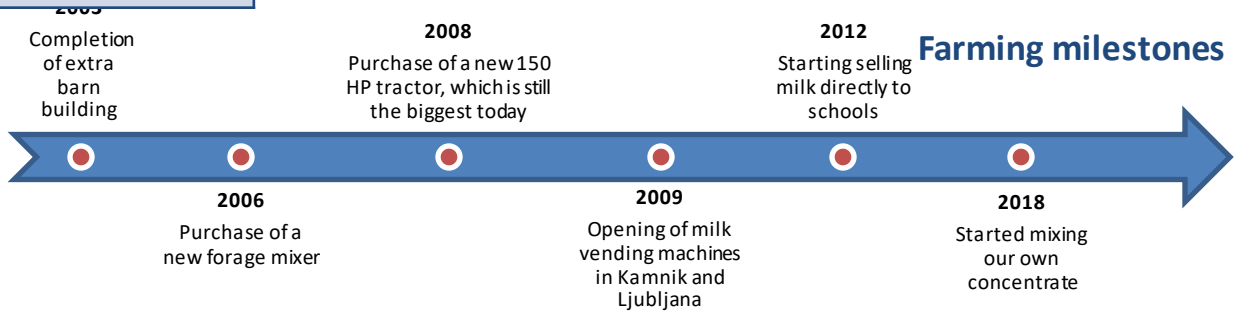




Innovations

Socio-economic Resilience / Environment



The herd

- 87 Livestock Units (LU)
- 53 dairy cows
- Breed: Holstein
- 39 dairy heifers
- Calving period: all year round
- Age at first calving: 29 months



Agricultural Area

- 35 ha Permanent Grassland
- 8 ha Forest
- 61 ha Arable land:
 - 21 ha Maize
 - 8 ha Soybeans
 - 10 ha Barley
 - 13 ha Alfalfa
 - 9 ha Grass

Workforces

- 3,5 labour units (Full Time Equivalent)
- 53 dairy cows
- **Aims** : Be more efficient, automatise more
- Aware of society and consumers

Areas of interest

- Optimal feeding at all stages of cow life
- Cow comfort and wellbeing
- Automation in dairy farming
- Using AI in areas of dairy farming

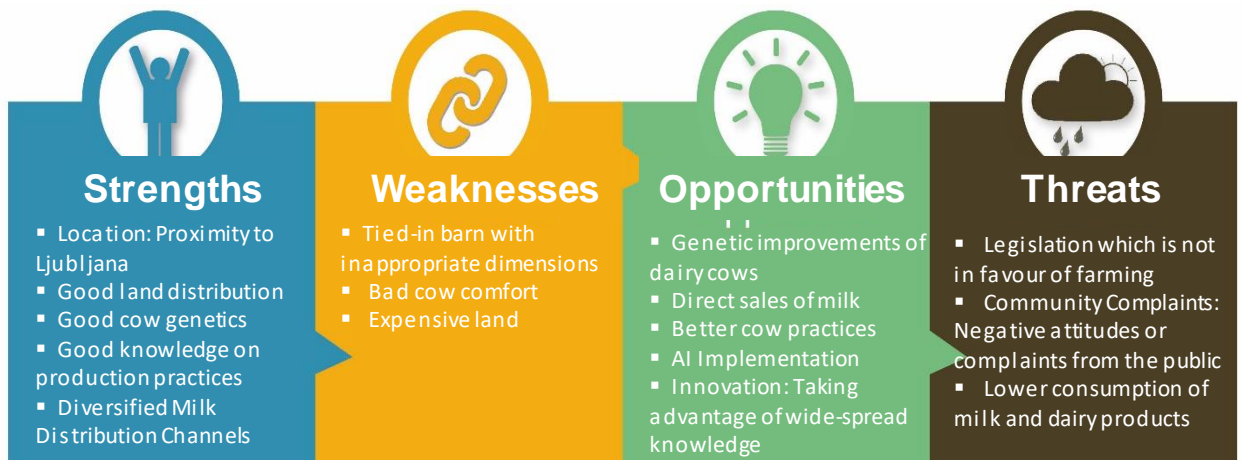
Main buildings and equipment

- Tied-in barn for dairy cows
- Pipeline milking system: 8 units
- 1 Feed Automat for concentrate on rail
- Individual boxes for young calves
- Collective boxes on slatted floor for heifers



Production/ Technical results

- 722 853 kg of milk produced (85 % sold via cooperative, 10 % sold via Milk vending machines, 5 % to schools)
- 3.47 % fat & 3.44 % protein content
- Stocking rate: 1.12 LU / ha forage area
- 13 117 kg of milk /cow /year & 9.267 kg /ha forage area
- 2.350 kg concen./cow/year
- Replacement rate: 32 %
- Breeding criteria
- High-production

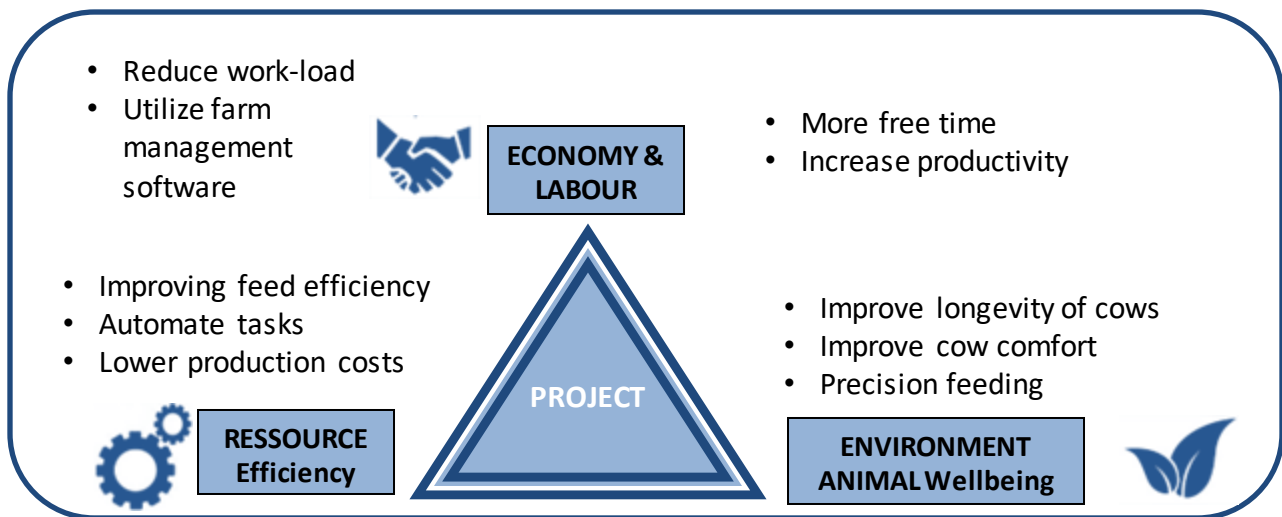


Strategy of the farmers / Resilience

In the future, we aim to heighten our farm's resilience through sustainable farming and optimized resource use, ensuring the long-term health of our land and livestock. We will diversify our milk distribution channels to mitigate market risks and sustain high productivity by investing in robust genetics. Embracing AI technology is an opportunity to increase operational efficiency and adaptability. Lastly, we plan to foster stronger community relations to maintain harmonious coexistence, thereby securing our farm's resilience and long-term prosperity

Area of interest / Aspirations / Needs for the future

Our objective is to enhance operational efficiency and prioritize cow comfort, aiming to thoughtfully automate routine tasks to lessen our workload. In all our transformations, the welfare of our livestock remains a key focus. Achieving these goals will require ongoing learning, adaptability, and strategic improvements. Furthermore, the exchange of knowledge and experiences with other farms on similar paths is invaluable to us.



Partner



University of Ljubljana

“Resilience 4 Dairy” is a European project involving 15 European countries and 18 partners. R4D is a thematic network on innovations and aims to support EU dairy farming in these regions where dairy farming is a main economic activity.



R4D pilot farmers are involved in a National Dairy Akis group where needs, solutions and knowledge are exchanged with other farmers, advisors and scientists on their way to build a resilient system. More information <https://resilience4dairy.eu/>