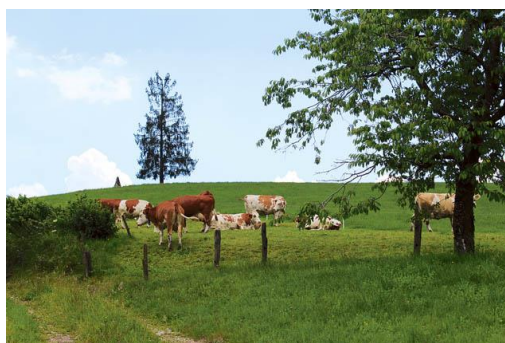


Innovations

Socio-economic Resilience / Environment



2008

New free-barn for dairy cows & increase the herd

2014

Construction of milk processing place & farm shop

2018

Hot air haystack

Farming milestones



2009

Start processing of milk

2015

Taking over the farm from father

2023

Solar power plant on the roof

The herd

- 42 Livestock Units (LU)
- 30 dairy cows
- Breed: Simmental
- 11 dairy heifers
- Calving period: all year round
- Age at first calving: 28 months



Agricultural Area

- **30 ha AA**
- 30 ha perm. grassland
- 30 ha Forest

Workforces

- 2 labour units (Full Time Equivalent)
- 15 dairy cows & 108 000 l /FTE
- **Aims**: Save time, be efficient,
- Aware of society and consumers

Areas of interest

- Grass management
- Milk processing to the cheese
- Genetics – genotype & suitable cows for grazing

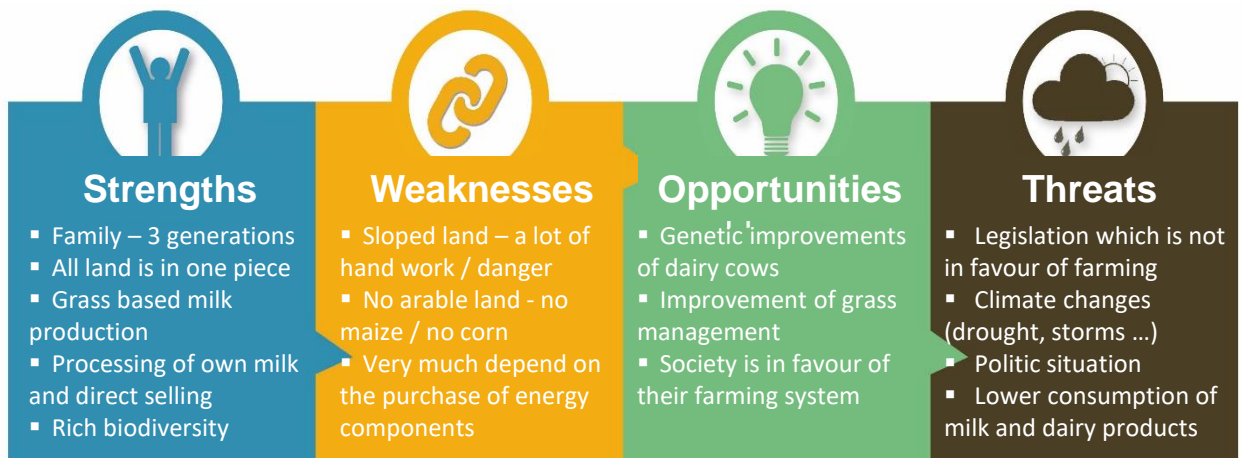
Main buildings and equipment

- Barn for dairy cows with cubicles & slatted floor & old barn for dry-off cows
- Milking parlour: Auto-tandem: 5 units
- 1 Feed Station for concentrate
- Individual boxes for young calves
- Collective boxes on slatted floor for heifers



Production / Technical results

- 215 676 kg of milk produced (50 % sold, 50 % processed on the farm)
- 4.03 % fat & 3.49 % protein content
- Stocking rate: 1.4 LU / ha forage area
- 7 423 kg of milk /cow /year & 7.189 kg /ha forage area
- 1.350 kg concentrate/cow/year
- Replacement rate: 33 %
- Breeding criteria (BB, A2A2)
- Grass-based production

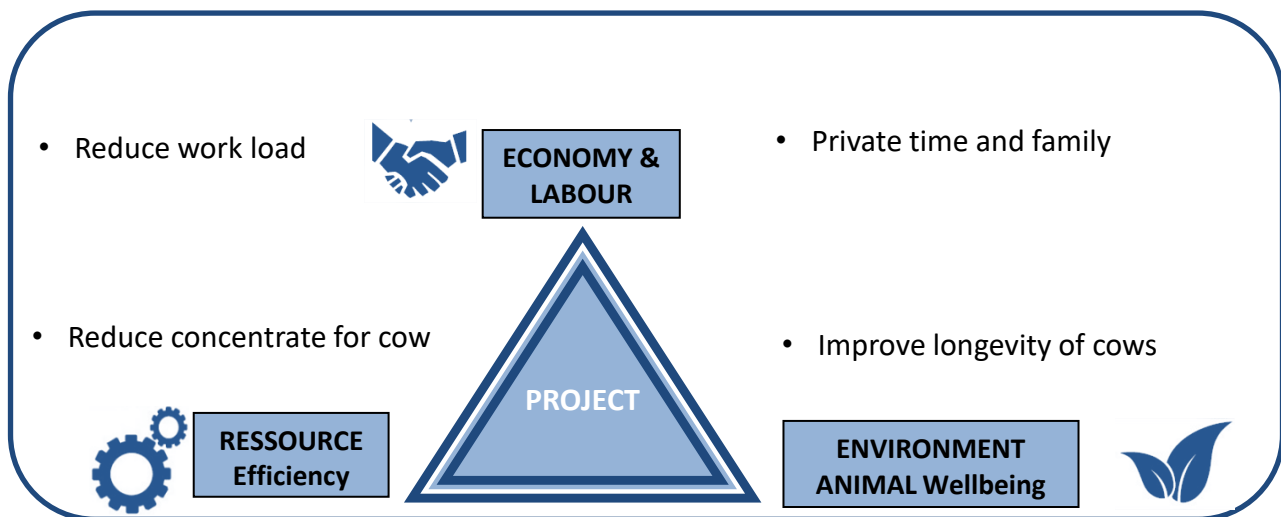


Strategy of the farmers to be resilient

Production of high-quality grass-based milk, which is the basis for processing of high-quality dairy products. Improvement of health and longevity of dairy cows. Added value and direct selling of dairy products in farm shop.

Area of interest / Aspirations / Needs for the future

Efficiency and improvement of grassland management are 2 keywords of this farm. Reducing of hard manual work and simplification of work tasks. They also pay attention to the balance between work and free time. Family life is important for this family.



Partner



University of Ljubljana

“Resilience 4 Dairy” is a European project involving 15 European countries and 18 partners. R4D is a thematic network on innovations and aims to support EU dairy farming in these regions where dairy farming is a main economic activity.



R4D pilot farmers are involved in a National Dairy Akis group where needs, solutions and knowledge are exchanged with other farmers, advisors and scientists on their way to build a resilient system. More information <https://resilience4dairy.eu/>