



Resilience for Dairy (R4D) has received funding from the European Union's Horizon 2020 research and innovation program under grant agreement No 101000770

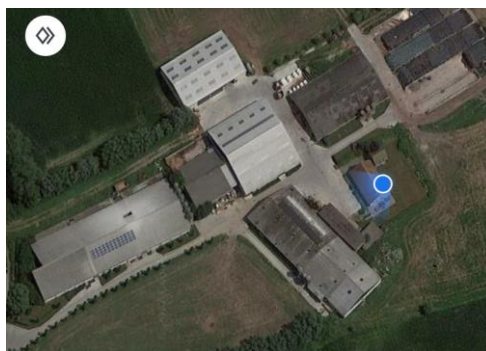
Fam. Van Hecke - Cornu
Geert en Carine
Pilot Farm Discription
Oudenburg

Belgium



Innovations

Socio-economic
Resilience /
Environment



Farming milestones

2001

Geert en Carine
take over a mixed farm

2018

young livestock:
new roof and new equipment

2005 – 2007

dairybarn: new milking
parlour, cubicles, mattresses
and wind screens

2022

one of the sons is
considering joining the
company

The herd (2021)

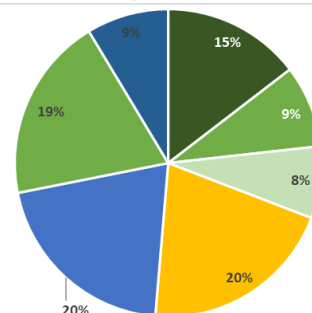
- 145 Livestock Units
- 88 Holstein
- 57 Young stock



- Calving period : all year round
- Age at first calving : 24 months
- Calving interval : 380 days

Cropping Plan

- Permanent Grass.
- Grass. cultivation
- Grass Clover
- Maize Silage
- Grain
- Grass Nature
- Catch Crop



Workforces

- 2 labor units : Geert & Senne
- **Aims** : Generate income, low cost production, optimisation and private time
- Also sows and porkers on the farm

Areas of interest

- Animal welfare
- Work efficiency : LEAN techniques
- More own protein production
- Own concentrate extraction

Main buildings and Equipment

dairy cows

- Cubicle barn for cows
- Milking: 2 x 7 (fullwood Packo)

Young stock

- < 5 months : straw



Production / Technical results (2021)

- 820 000 liters of milk produced
- Fat : 4,4 g/l & protein: 3,6 g/l
- Replacement Rate: 26 %
- 9 640 kg of milk /cow /year (FPCM)
- 1 770 kg of concentrate/cow/year
- 2 490 kg of concentrated feed/cow/year
- Return over feed cost : 21 €/100 l



Strengths

- Efficiency
- Labour planning
- Good technical key-results
- Mixed farm : risk management



Weaknesses

- Pressure of nature areas
- Mixed farm : more investments, more knowledge needed



Opportunities

- Improvement technical results



Threats

- Rapidly changing legislation
- Increased feed and fertiliser costs
- Climate change, drought

Strategy of the farmer to improve resilience

This company is focused on cost control. Top production is not the objective. Less focus on production means significantly lower vet costs, which improves the health and wellbeing of the cows. As managers, they are also always looking for more work efficiency. In doing so, they use LEAN where very simple techniques can ensure very simple work and quick overview.

Areas of interest / Aspirations / Needs for the future

Continue working on LEAN techniques for further optimisation and possibly interest in small wind turbine to increase energy efficiency.

Improvement project - objectives

- Reduce work load
- Reduction of cost production



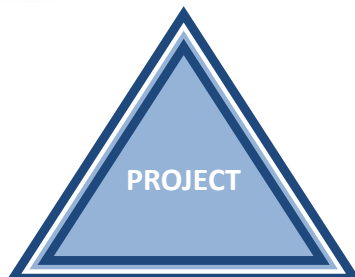
ECONOMY & LABOUR

- Private time and family

- More own protein production



RESSOURCE Efficiency



- Animal welfare

ENVIRONMENT ANIMAL Wellbeing



Partners

inagro
ONDERZOEK & ADVIES IN LAND- & TUINBOUW

BOEREN BOND

“Resilience 4 Dairy” is a European project involving 15 European countries and 18 partners. R4D is a thematic network on innovations and aims to support EU dairy farming in these regions where dairy farming is a main economic activity.



R4D pilot farmers are involved in a National Dairy Akis group where needs, solutions and knowledge are exchanged with other farmers, advisors and scientists on their way to build a resilient system. More information : www.resilience4dairy.eu