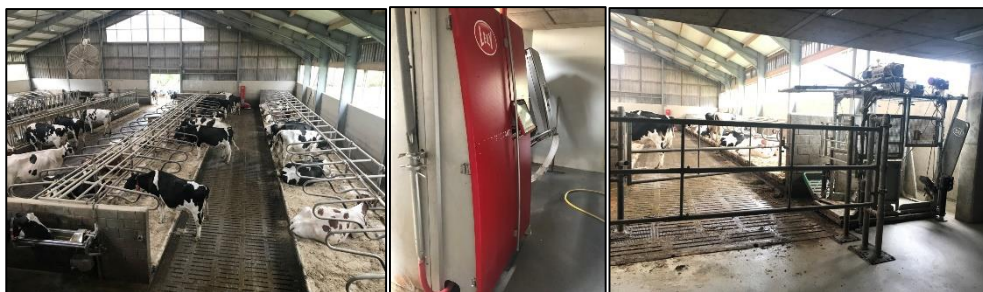




Innovations

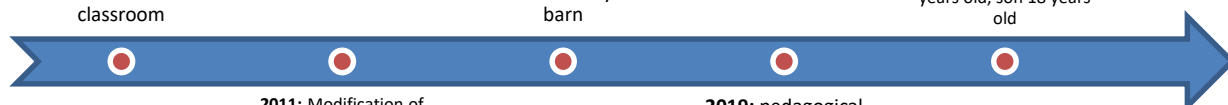


Farming milestones

2007: Milestone:
Business takeover &
classroom

2017: new dairy cow
barn

2022: farm manager 60
years old, son 18 years
old



2011: Modification of
young cattle barn

2019: pedagogical
farm

The herd

- 1,3/1,4 GVE
- 60 dairy cows
Breed : Holstein Friesian
- 70 heifers
- Calving period : all year
- Age at first calving : 25-26 months

Agricultural Area

- 90 ha AA**
- 60 ha permanent grassland
 - 10 ha silage maize
 - 10 ha barley 10 ha Wheat
 - 13 ha forest
 - 70 ha main forage area
 - **85 % of grassland / forage area**

Workforces

- 1 labour unit (Full Time Equivalent)
- 60 dairy cows/FTE & 600.000 l /FTE
- **Aim** : outsourcing field work

Areas of interest

- breeding
- digitalisation

Main buildings and Equipment

- Milking robot
- Young cattle in older buildings (deep straw & cubicles)
- Slurry stockage (capacity for 11 months)

Production / Technical results

- 600.000 liters of produced milk (100% sold)
- 4,2 % fat & 3,3 –3,4 % protein content
- Stocking rate: 1,3 LU / ha forage area
- 10000l of milk /cow /year & 8571 l /ha forage area



 <h3>Strengths</h3> <ul style="list-style-type: none"> ▪ Cattleman ▪ classroom, group activities 	 <h3>Weaknesses</h3> <ul style="list-style-type: none"> ▪ not every AA or farm site near the barn 	 <h3>Opportunities</h3> <ul style="list-style-type: none"> ▪ visit of LTA 	 <h3>Threats</h3> <ul style="list-style-type: none"> ▪ no expansion possible at the site ▪ land loss
--	--	---	--

Farmer's strategy for a "resilient" system

- Sustainable management: water protection, optimal spreading of slurry
 - Pedagogical farm will be extended
- Low mineral nitrogen fertilisation (12 t KAS), 17 ha in agri-environmental and climate measures

Aspirations / Need for the future

- Plant some fruit trees → make apple juice with the classes

Improvement project - objectives

- More free time



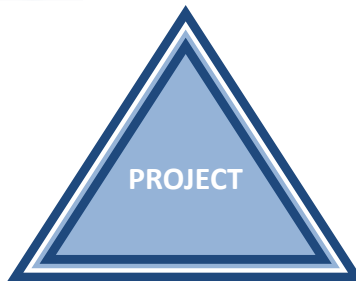
ECONOMY & LABOUR

- 10.000 l, milking milk profitably
- Better forage

- Young cattle on pasture



RESSOURCE Efficiency



- Water protection → optimisation of slurry spreading

ENVIROMENT & ANIMAL Wellbeing



Partners



Lycée Technique Agricole

“Resilience 4 Dairy” is a European project involving 15 European countries and 18 partners. R4D is a thematic network on innovations and aims to support EU dairy farming in these regions where dairy farming is a main economic activity.



R4D pilot farmers are involved in a National Dairy Akis group where needs, solutions and knowledge are exchanged with other farmers, advisors and scientists on their way to build a resilient system. More information <https://resilience4dairy.eu/>