



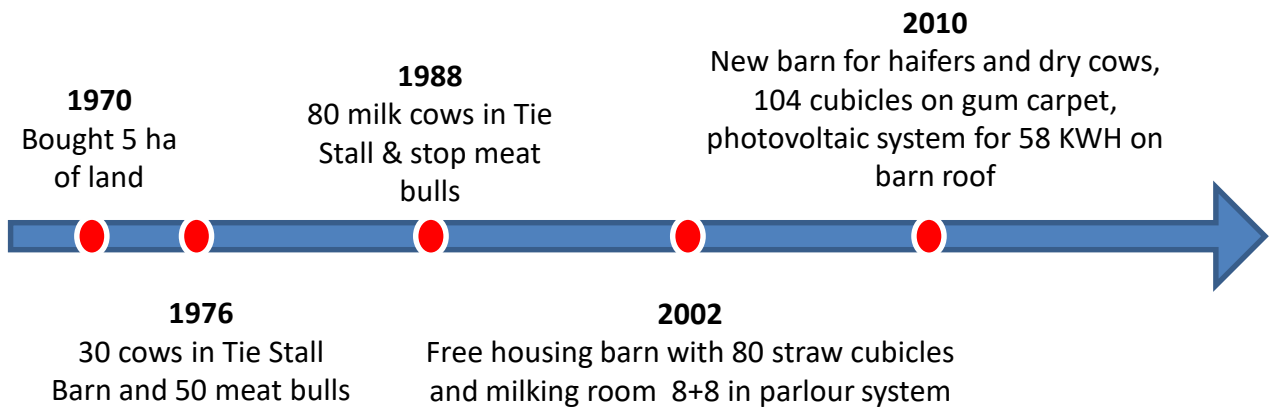
Resilience for Dairy (R4D) has received funding from the European Union's Horizon 2020 research and innovation program under grant agreement No 101000770

# AZ. AGR. LA MOLINA DI DELLAI GIORGIO E FRANCESCO

ITALY



## Farming milestones



Pilot Farm description

## The herd

- 250 Livestock Units (LU)
- 115 dairy cows
- **Breed: Frisian**
- .... dairy heifers
- **Calving period : all year round**
- **Age at first calving : ... months**
- **In spring and autumn heifers and dry cows are outdoor for 70/80 days**



## Agricultural Area

### 70 ha AA (12 property + 58 rented)

- 39 ha hay
- 12 ha maize
- 19 ha double crop:

IN SPRING: 6 ha ryegrass, 6 ha grain silage, 4 ha barley silage, 3 ha pasture

IN AUTUMN: 9 ha sorghum silage, 8 ha grain sorghum for mash, 2 ha soybean

All hay and silage are self-produced, flours and concentrates are purchased

All land work to produce hay is done by the farm

All work in arable crops is done by contractors



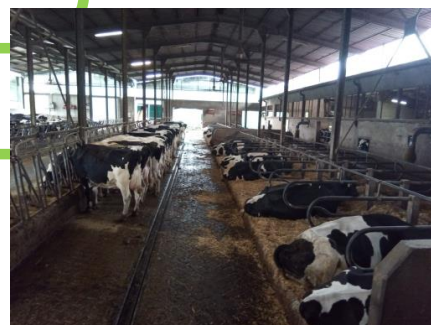
### Workforces

- Family-run business
- 3 labour units (Full Time Equivalent)



### Areas of interest

- Technical efficiency: cooling system, slurry management, electric mixing wagon
- Genetics: milk quality for PDO products (casein)
- Optimization of milk price
- Animal welfare and sustainability



### Main buildings and Equipment

- Free housing
- Milking cows: 80 straw cubicles
- Haifers and dry cows: 104 cubicles on gum carpet
- Milking parlor: 8+8 in parlour system
- Photovoltaic system for 58 KWH on barn roof

### Production / Technical results

- 1310 tons of milk produced, 100% delivered to cooperative Lattebusche for PDO cheeses production (eg. Grana Padano and Asiago Cheese)
- 3,92 % fat & 3,32 % protein
- 37 l of milk /cow /day
- Lattebusche dairy cooperative has about 330 members and collects about 400 tons of milk/day. It produces specially PDO hard cheeses but also soft cheeses, liquid milk, yogurt and ice cream

### Farmer's strategy for a "resilient" system

- In spring and autumn heifers and dry cows are **outdoor** for 70/80 days (70/80 all'anno o per stagione???)
- 19 ha **double crop**: PRING (ryegrass, grain silage, barley silage, pasture) and AUTUMN (sorghum silage, grain sorghum for mash, soybean)
- All the **hay and silages are self-produced** (only flours and concentrates are purchased)
- All **land work to produce hay is done by the farm**

### Aspirations / Needs for the future

- Keep the same number of animals, but modernize the **cooling system** and adopt new techniques/technologies for **slurry/manure management**
- Collaborate with the Cooperative to **improve quality of milk**, particularly using **genetic research** and bulls for the improvement of **casein content**
- Collaborate with the Cooperative to **improve animal welfare and environmental sustainability**
- At the moment the **price of milk** is 0,36 € excluding quality and VAT, but the farm hopes to have a balance at the beginning of 2022 (In 2020 the final price was 0,46 €/lt including quality and VAT)
- Purchase an **electric mixing wagon**

Partners

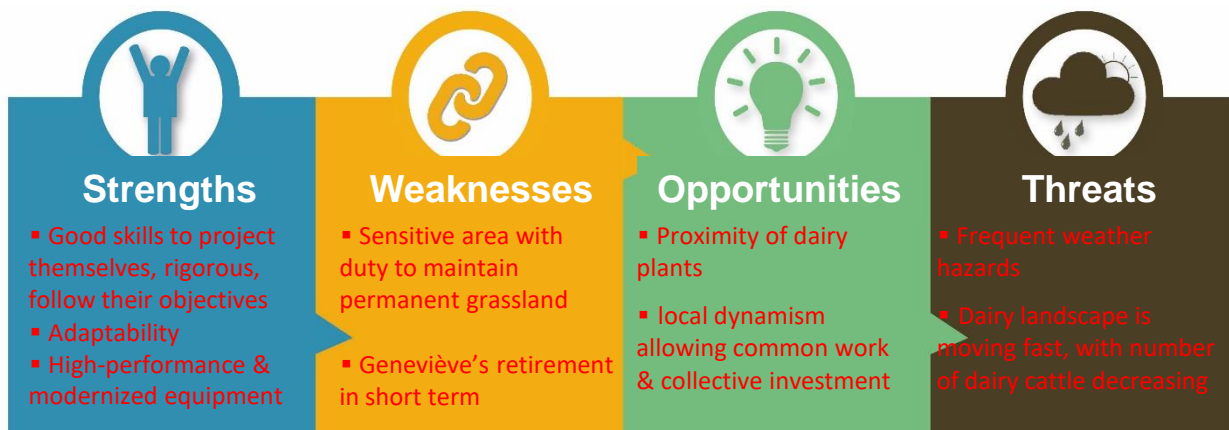


"Resilience 4 Dairy" is a European project involving 15 European countries and 18 partners. R4D is a thematic network on innovations and aims to support EU dairy farming in these regions where dairy farming is a main economic activity.



R4D pilot farmers are involved in a National Dairy Akis group where needs, solutions and knowledge are exchanged with other farmers, advisors and scientists on their way to build a resilient system. More information <https://resilience4dairy.eu/>

# Cose avanzate: valutare se si possono customizzare o se aggiungono poche info pur richiedendo molto tempo:



## Improvement project - objectives

- Reduce work load



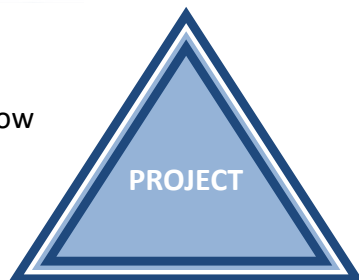
**ECONOMY & LABOUR**

- Optimize dairy gross margin
- Keep a good global profitability for a knowledge transfer centre

- Reduce concentrate for cow
- Save water consumption



**RESSOURCE Efficiency**



- Keep a good mineral balance
- Improve forage self-sufficiency

**ENVIRONMENT ANIMAL Wellbeing**

