

Innovations

Socio-economic Resilience /



1996

Rodolphe's establishment

2005

Creation of the EARL and building of the milking parlour

2013

Built two treehouses

Farming milestones

2000

Aurélie's arrival as collaborating partner

2009

Opening of 2 farm gate

2015

Barn and manure area expansions+ building of a pool

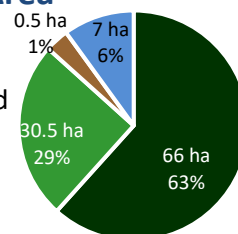
The herd

- 137 LU
- 85 dairy cows
- **Breed: Normande (100%)**
- 25% replacement rate
- average calving rank 2.9
- Calving period: grouped
- Age at first calving: 30 months
- Artificial insemination (100%)

Agricultural Area

104 ha AA (2022)

- 57 ha permanent grassland
- 9 ha temporary grassland
- 30.5 ha maize silage
- 7 ha wheat
- 0.5 ha of orchard



Workforces

- 2 MWU
- 42 cows & 268,000 l/MWU

Areas of interest

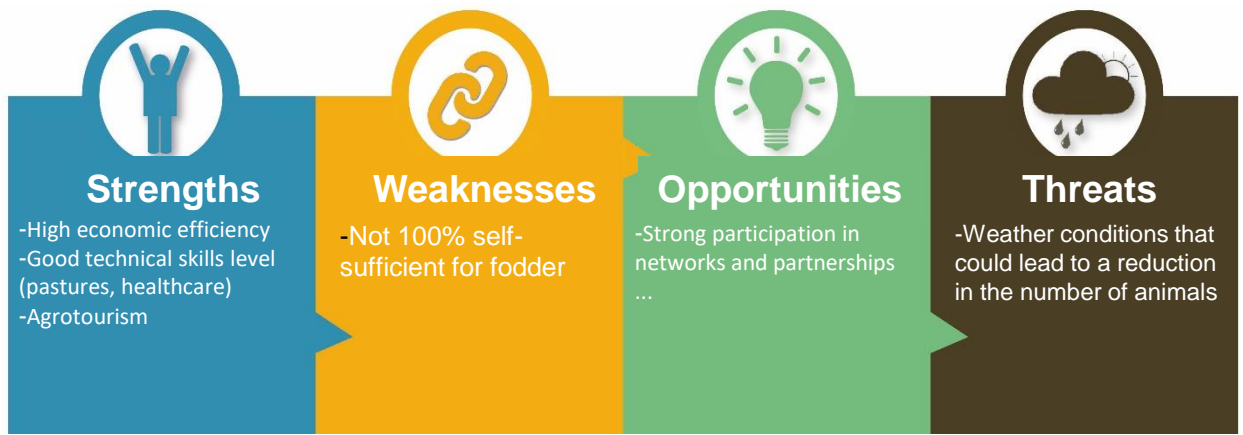
- Pastures
- Work organization

Main buildings and Equipment

- Building of piled litter
- Dynamic rotational grazing for DCs (0.6 ha of paddocks)
- 2x6 TPA milking parlour, single output
- MilkTaxi

Production / Technical results

- 537,000 liters of milk produced
- 45.6 g/l fat & 36.3 g/l protein content
- Load: 1.4 LU/ha main forage area
- 7,000 l/DC/year of raw milk and 7,800 l/DC of corrected milk
- 5,530 l/ha main forage area



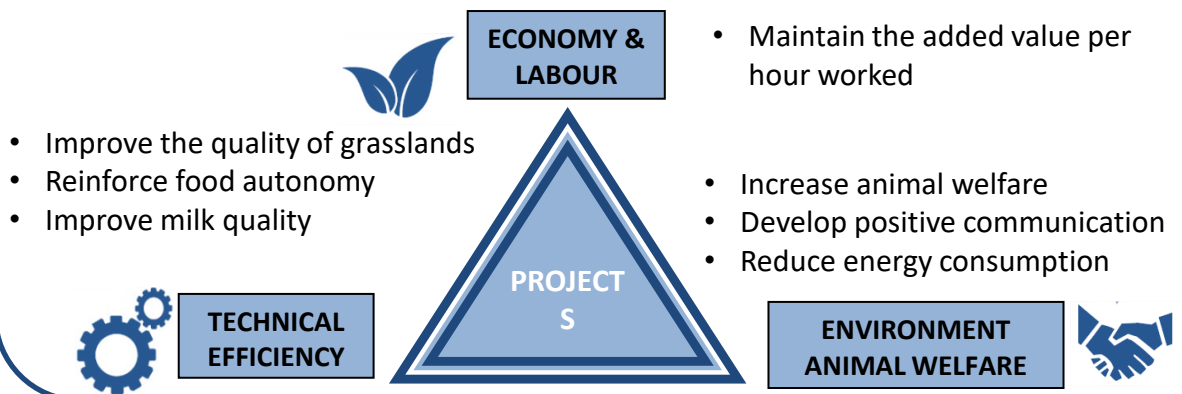
Farmer's strategy for a "resilient" system:

In order to have a resilient system, the farmers have developed a family-based production system that values milk production, with a majority share of grass, by a Norman herd. With the development of farm tourism activity with gites and tree houses, a particular attention is paid to the acceptability of this traditional Norman system to welcome a urban audience (food autonomy, animal welfare, proximity and positive attitude). A high level of resilience for this farm with an efficient organization, a technical and organizational anticipation at its best, a natural propensity for exchanges and self-questioning.

Aspirations / Needs for the future

Maintaining the high economic efficiency of the system by reinforcing the share of food autonomy, the quality of the pastures and milk. By targeting tourists, farmers wish to reinforce the attractiveness of the farming profession and especially their positive communication.

Projects - Objectives



Partners



"Resilience 4 Dairy" is a European project involving 15 European countries and 18 partners. R4D is a thematic network on innovations and aims to support EU dairy farming in these regions where dairy farming is a main economic activity.



R4D pilot farmers are involved in a National Dairy Akis group where needs, solutions and knowledge are exchanged with other farmers, advisors and scientists on their way to build a resilient system.

More information <https://resilience4dairy.eu/>