


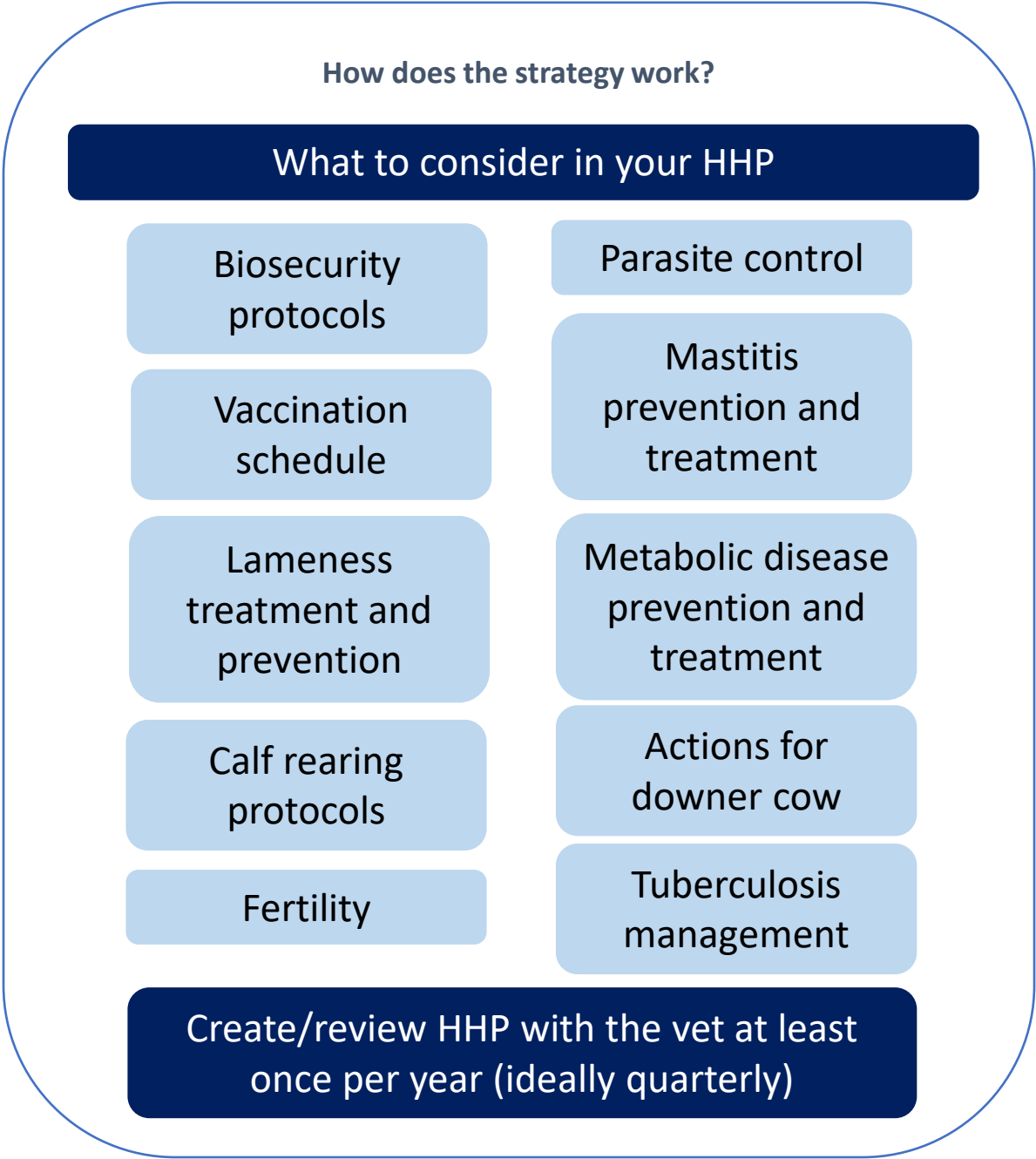



Topic	Topic	Topic
Technical efficiency 	Animal welfare 	Economic resilience 

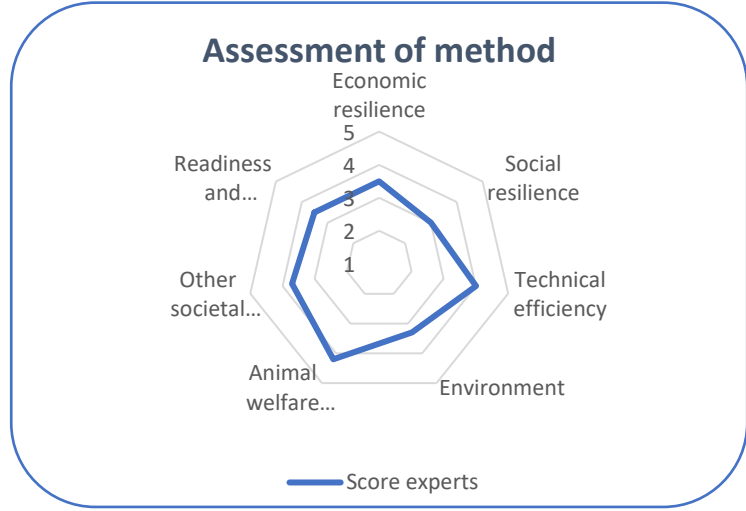
Background
 Good animal health is key to improving animal welfare and increasing productivity. Creating a herd health plan (HHP) with a vet helps to mitigate the risk of disease and review the current health status of the herd. The plan should outline preventative strategies as well as treatment protocols.



- Positive features**
- Preventative measures in place to improve the health of the herd
 - A plan in place for effective treatment of key diseases identified
 - Positive for cow and calf welfare
 - Increased productivity
- 

- Negative features**
- Cost of a vet visiting the farm and creating the HHP
 - Vets and farmers may be limited in the time they have available to create and review HHP

- Specific advice**
- A HHP should be tailored specifically for each individual farm
 - A HHP is not a fixed document, it should be continuously updated as the health status of the herd changes
 - Ensure your vet is trained in preventative methods (see fact sheet 43)



Quote of the farmer:
“The herd health plan is a crucial part of our farm for improving the health our herd”

